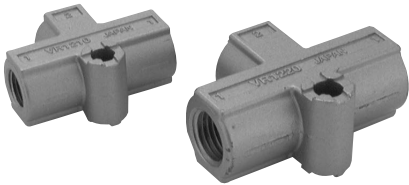


# Shuttle Valve with One-touch Fittings VR1210(F)/1220(F) Series

## How to Order



VR12 **1** 0 - **01**

• Port size

Port size	Applicable model
01	1/8 VR1210
02	1/4 VR1220

• Thread type

Nil	Rc
N	NPT
F	G

• Body size

1	1/8 standard
2	1/4 standard



VR 12 **1** 0 F - **06**

• Body size

1	1/8 standard
2	1/4 standard

• Shuttle valve

• With One-touch fittings

• Applicable tubing O.D.

Metric size		Inch size	
23	ø3.2*	01	ø1/8"
04	ø4	03	ø5/32"
06	ø6	07	ø1/4"
08	ø8	09	ø5/16"
10	ø10	11	ø3/8"

\* For ø3.2, use ø1/8" tubing.

SMC validation products have been validated based on ISO 13849-2: 2012 Annex A & B.