

Pilot Operated Check Valve

XTO Series

How to Order

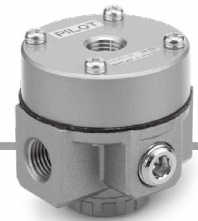
XTO - 2571 - 02

Body size

2571	Body O.D.: ø52
1239	Body O.D.: ø84
1719	Body O.D.: ø98

Port size

02	Rc 1/4
03	Rc 3/8
04	Rc 1/2
06	Rc 3/4
10	Rc 1



Model	Port size				
	Rc 1/4	Rc 3/8	Rc 1/2	Rc 3/4	Rc 1
XTO-2571	●	●	—	—	—
XTO-1239	●	●	●	—	—
XTO-1719	—	—	—	●	●

SMC validation products have been validated based on ISO 13849-2: 2012 Annex A & B.