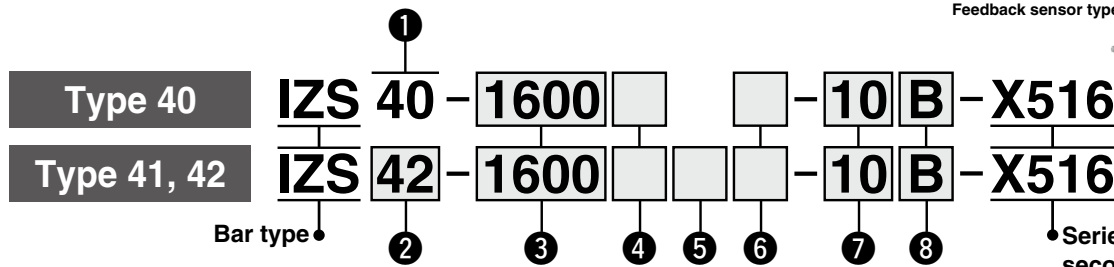
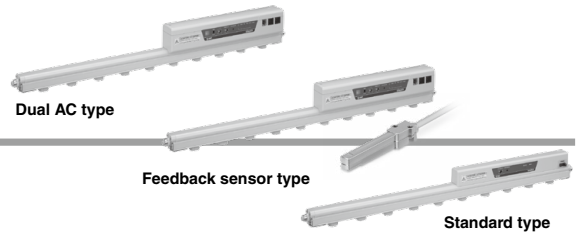


Ionizer

IZS40/41/42-X516 Series

How to Order



1 Type

40	Standard type
----	---------------

4 Emitter cartridge type/Emitter material

Symbol	Emitter cartridge type	Emitter material
Nil	High speed static neutralization cartridge	Tungsten
C	Energy saving static neutralization cartridge	Silicon
J	Energy saving high-efficiency cartridge	Tungsten
K		Silicon
V		Tungsten
S		Silicon

7 One-touch fitting

06	ø6 One-touch fitting
08	ø8 One-touch fitting
10	ø10 One-touch fitting

- * Refer to the recommended piping port size in the table on the right for selecting a One-touch fitting.
- * Please order a plug (part no.: KQ2P-□) separately if the product is to be used with piping only on one side.
- * The One-touch fitting cannot be changed after the delivery of the product.

8 Bracket

Symbol	Bracket
Nil	Without bracket
B	With bracket

- * The number of intermediate brackets differ depending on the bar length. (Refer to the table below.)

Number of brackets

Bar length symbol	End bracket	Intermediate bracket
340 to 760	2	None
820 to 1600		1
1660 to 2380		2
2440 to 2500		3

2 Type

41	Feedback sensor type
42	Dual AC type

5 Input/Output

Nil	NPN
P	PNP

- * The input/output function cannot be used when an AC adapter is being used.

6 Power supply cable

Nil	With power supply cable (3 m)
Z	With power supply cable (10 m)
N	Without power supply cable

Recommended piping port size for the IZS4□ High speed static neutralization cartridge

One-touch fitting symbol	Applicable tubing O.D.	Bar length symbol											
		340	400	460	580	640	820	1120	1300	1600	1900	2320	2500
06	ø6 mm	○	○	○	○	○	●	●	●	—	—	—	—
08	ø8 mm	○	○	○	○	○	○	○	○	●	●	●	●
10	ø10 mm	○	○	○	○	○	○	○	○	○	○	○	○

- : With piping only on one side ●: With piping on both sides —: Unrecommended piping

Energy saving static neutralization cartridge

One-touch fitting symbol	Applicable tubing O.D.	Bar length symbol												
		340	400	460	580	640	820	1120	1300	1600	1900	2320	2500	
06	ø6 mm	○	○	○	○	○	○	○	○	○	●	●	●	●
08	ø8 mm	○	○	○	○	○	○	○	○	○	○	○	○	○
10	ø10 mm	○	○	○	○	○	○	○	○	○	○	○	○	○

- : With piping only on one side ●: With piping on both sides

Energy saving high-efficiency cartridge

One-touch fitting symbol	Applicable tubing O.D.	Bar length symbol												
		340	400	460	580	640	820	1120	1300	1600	1900	2320	2500	
06	ø6 mm	○	○	○	○	○	○	○	○	○	○	○	○	○
08	ø8 mm	○	○	○	○	○	○	○	○	○	○	○	○	○
10	ø10 mm	○	○	○	○	○	○	○	○	○	○	○	○	○

- : With piping only on one side

- * The piping port of this product has been changed to a One-touch fitting. Other specifications, including the dimensions, are the same as those of the standard product.

For details, refer to the [Web Catalog](#).

IZS40/41/42-X516 Series

Accessories Sold Separately

Drop prevention cover

IZS40-E 3

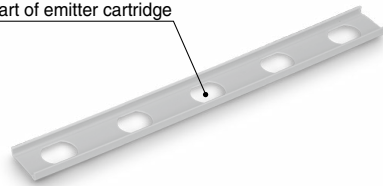
Number of fixed emitter cartridges

IZS40-E3	3
IZS40-E4	4
IZS40-E5	5

Number of required drop prevention covers

Bar length symbol	Number of required drop prevention covers		
	IZS40-E3	IZS40-E4	IZS40-E5
340	—	—	1
400	2	—	—
460	1	1	—
580	—	1	1
640	—	—	2
820	1	—	2
1120	1	—	3
1300	2	—	3
1600	2	—	4
1900	2	—	5
2320	1	—	7
2500	2	—	7

Mounted part of emitter cartridge



Drop prevention cover

When attached to the body

Remote controller IZS41-RC



AC adapter For IZS40

IZF10-C

AC adapter

G1	AC adapter + AC cord*1
G2	AC adapter (Without AC cord)

*1 When "G1" is selected, an AC cord with a rated voltage of 125 V is included.

If using an input voltage exceeding 125 VAC, select "G2" (Without AC cord) and prepare a suitable AC cord separately.



For IZS40

For IZS41, 42

IZS41-C

AC adapter

G1	AC adapter + AC cord*1
G2	AC adapter (Without AC cord)

*1 When "G1" is selected, an AC cord with a rated voltage of 125 V is included.

If using an input voltage exceeding 125 VAC, select "G2" (Without AC cord) and prepare a suitable AC cord separately. The external input/output function of the IZS41 and 42 cannot be used when an AC adapter is being used.



For IZS41, 42

Transition wiring cable

IZS41-CF

Transition wiring cable

02	Full length 2 m
05	Full length 5 m
08	Full length 8 m



Made to Order

How to Order	
IZS41-CF - X13	
● Transition wiring cable length	
Model with made-to-order transition wiring cable	Available in 1 m increments from 1 m to 20 m
* Power cables 11 m or longer are not CE Marking-compliant.	
* Use standard power supply cables for 2 m, 5 m, and 8 m lengths.	
* Transition wiring is not available for the IZS40.	
Symbol	Cable full length
01	1 m
03	3 m
...	...
19	19 m
20	20 m

Cleaning kit IZS30-M2

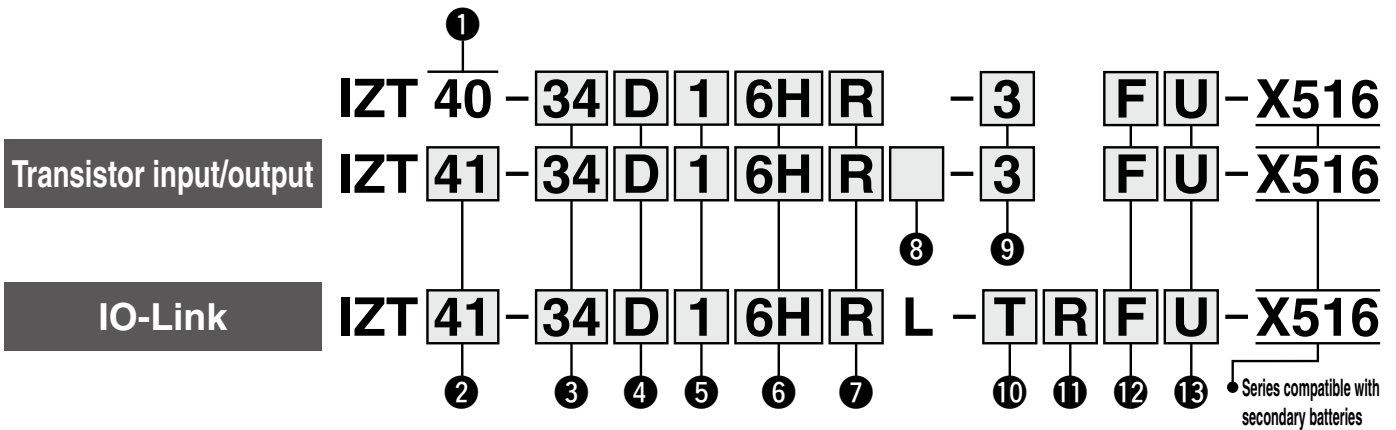


Separate Controller Bar Type Ionizer

IZT40/4□(-L)-X516

How to Order

Bar + High voltage power supply module + Controller



1 Model

Symbol	Model
40	Standard type

2 Model

Symbol	Model
41	AC type
42	Dual AC type

5 High voltage cable length

Symbol	High voltage cable length [m]
1	1
2	2
3	3

* The number of included high voltage cable holders differs depending on the high voltage cable length. (Refer to the table below.)

Number of included high voltage cable holders

⇒ Refer to page 285-8.

Symbol	IZT40		IZT41		IZT42	
	Straight	Elbow	Straight	Elbow	Straight	Elbow
1	1	1	1	1	2	2
2	2	1	2	1	4	2
3	3	1	3	1	6	2

3 Bar length

Symbol	Length [mm]	Symbol	Length [mm]
16	160	82	820
22	220	112	1120
34	340	130	1300
40	400	160	1600
46	460	190	1900
58	580	232	2320
64	640	250	2500

6 One-touch fitting

Symbol	Metric size
6H	ø6 Straight
8H	ø8 Straight
AH	ø10 Straight

* Refer to the recommended piping port size on the next page for selecting a One-touch fitting.

4 Emitter cartridge type/ Emitter material

Symbol	Type	Material
D	High speed static neutralization cartridge	Tungsten
E	Energy saving static neutralization cartridge	Tungsten
L	High speed static neutralization cartridge	Silicon
M	Energy saving static neutralization cartridge	Silicon
V	High efficiency static neutralization cartridge	Tungsten
S	High efficiency static neutralization cartridge	Silicon

7 Plug position

Symbol	Plug position
Nil	Without plug
Q	High voltage cable side
R	Opposite side of the high voltage cable

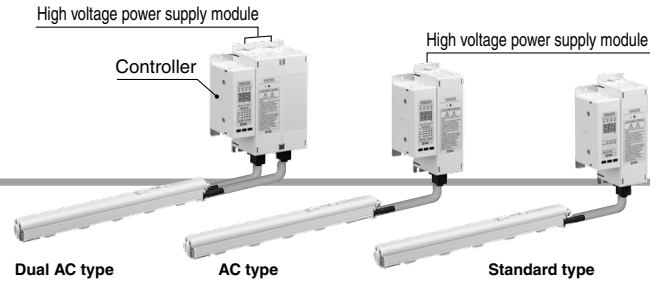
8 Input/Output

Symbol	Input/Output
Nil	NPN
P	PNP

* The input/output function cannot be used when an AC adapter is being used.

* The piping port of this product has been changed to a One-touch fitting. Other specifications, including the dimensions, are the same as those of the standard product.

For details, refer to the [Web Catalog](#).



9 Power supply cable length

Symbol	Length [m]
3	3
5	5
10	10
15	15
N	None

* To use an AC adapter, specify "N", and select the AC adapter sold separately.

10 Power supply cable entry direction/length

Symbol	Entry direction	Length [m]
N	None	
J	Straight	3
K		5
M		10
S		3
T	Angled	5
Z		10

11 Communication cable entry direction/length

Symbol	Entry direction	Length [m]
N	None	
E	Straight	0.5
G		1
H		2
J		3
K		5
M		10
P		0.5
Q	Angled	1
R		2
S		3
T		5
Z		10

12 Bar bracket ⇨ Refer to page 285-8.

Symbol	Type
Nil	Without bracket
B	With bracket 1
F	With bracket 2

* The number of intermediate brackets differs depending on the bar length. (Refer to the table below.)

Number of brackets

Bar length [mm]	End bracket	Intermediate bracket
160 to 760	2	None
820 to 1600		1
1660 to 2380		2
2440 to 2500		3

13 DIN rail mounting bracket for controller and high voltage power supply module

⇨ Refer to page 285-8.

Symbol	For controller	For high voltage power supply module
Nil	None	None
U	Included	Included
W	Included	None
Y	None	Included

Recommended piping port size for the IZT4□ High speed static neutralization cartridge

One-touch fitting symbol	Applicable tubing O.D. [mm]	Bar length [mm]													
		160	220	340	400	460	580	640	820	1120	1300	1600	1900	2320	2500
6H	ø6	○	○	○	○	○	○	●	●	●	—	—	—	—	—
8H	ø8	○	○	○	○	○	○	○	○	●	●	●	●	—	—
AH	ø10	○	○	○	○	○	○	○	○	○	○	○	●	●	●

○: With piping only on one side ●: With piping on both sides —: Unrecommended piping

Energy saving static neutralization cartridge

One-touch fitting symbol	Applicable tubing O.D. [mm]	Bar length [mm]													
		160	220	340	400	460	580	640	820	1120	1300	1600	1900	2320	2500
6H	ø6	○	○	○	○	○	○	○	○	○	●	●	●	●	—
8H	ø8	○	○	○	○	○	○	○	○	○	○	○	○	●	●
AH	ø10	○	○	○	○	○	○	○	○	○	○	○	○	○	○

○: With piping only on one side ●: With piping on both sides —: Unrecommended piping

Energy saving high-efficiency cartridge

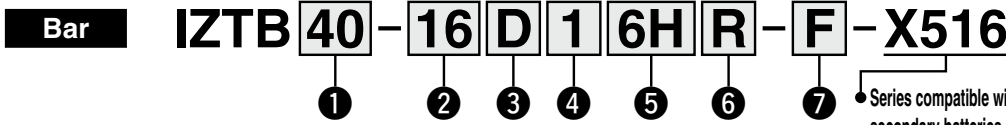
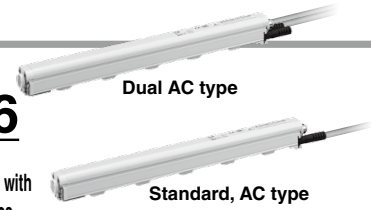
One-touch fitting symbol	Applicable tubing O.D. [mm]	Bar length [mm]													
		160	220	340	400	460	580	640	820	1120	1300	1600	1900	2320	2500
6H	ø6	○	○	○	○	○	○	○	○	○	○	○	○	○	○
8H	ø8	○	○	○	○	○	○	○	○	○	○	○	○	○	○
AH	ø10	○	○	○	○	○	○	○	○	○	○	○	○	○	○

○: With piping only on one side

IZT40/4□(-L)-X516

For Individual Parts

How to Order



1 Model

Symbol	Model
40	Standard type (For IZT40), AC type (For IZT41)
42	Dual AC type (For IZT42)

2 Bar length

Symbol	Length [mm]	Symbol	Length [mm]
16	160	82	820
22	220	112	1120
34	340	130	1300
40	400	160	1600
46	460	190	1900
58	580	232	2320
64	640	250	2500

3 Emitter cartridge type

Symbol	Type	Material
D	High speed static neutralization cartridge	Tungsten
E		Silicon
L	Energy saving static neutralization cartridge	Tungsten
M		Silicon
V	Energy saving high-efficiency cartridge	Tungsten
S		Silicon

5 One-touch fitting

Symbol	Metric size
6H	ø6 Straight
8H	ø8 Straight
AH	ø10 Straight

- * Refer to the table below for selecting a One-touch fitting.
- * The position of the One-touch fitting and the plug cannot be changed after the delivery of the product.

4 High voltage cable length

Symbol	High voltage cable length [m]
1	1
2	2
3	3

- * The number of included high voltage cable holders differs depending on the high voltage cable length. (Refer to the table below.)

Number of included high voltage cable holders

⇒ Refer to page 77.

Symbol	IZT40		IZT41		IZT42	
	Straight	Elbow	Straight	Elbow	Straight	Elbow
1	1	1	1	1	2	2
2	2	1	2	1	4	2
3	3	1	3	1	6	2

6 Plug position

Symbol	Position
Nil	Without plug
Q	High voltage cable side
R	Opposite side of the high voltage cable

7 Bar bracket ⇒ Refer to page 285-8.

Symbol	Type
Nil	Without bracket
B	With bracket 1
F	With bracket 2

- * The number of intermediate brackets differs depending on the bar length. (Refer to the table below.)

Number of brackets

Bar length	End bracket	Intermediate bracket
160 to 760	2	None
820 to 1600		1
1660 to 2380		2
2440 to 2500		3

Recommended piping port size for the IZT4□

High speed static neutralization cartridge

One-touch fitting symbol	Applicable tubing O.D.	Bar length [mm]														
		160	220	340	400	460	580	640	820	1120	1300	1600	1900	2320	2500	
6H	ø6 mm	○	○	○	○	○	○	●	●	●	—	—	—	—	—	
8H	ø8 mm	○	○	○	○	○	○	○	○	●	●	●	●	—	—	
AH	ø10 mm	○	○	○	○	○	○	○	○	○	○	○	○	●	●	●

- : With piping only on one side ●: With piping on both sides —: Unrecommended piping

Energy saving static neutralization cartridge

One-touch fitting symbol	Applicable tubing O.D.	Bar length [mm]														
		160	220	340	400	460	580	640	820	1120	1300	1600	1900	2320	2500	
6H	ø6 mm	○	○	○	○	○	○	○	○	○	○	○	○	○	○	—
8H	ø8 mm	○	○	○	○	○	○	○	○	○	○	○	○	○	○	○
AH	ø10 mm	○	○	○	○	○	○	○	○	○	○	○	○	○	○	○

- : With piping only on one side ●: With piping on both sides —: Unrecommended piping

Energy saving high-efficiency cartridge

One-touch fitting symbol	Applicable tubing O.D.	Bar length [mm]														
		160	220	340	400	460	580	640	820	1120	1300	1600	1900	2320	2500	
6H	ø6 mm	○	○	○	○	○	○	○	○	○	○	○	○	○	○	○
8H	ø8 mm	○	○	○	○	○	○	○	○	○	○	○	○	○	○	○
AH	ø10 mm	○	○	○	○	○	○	○	○	○	○	○	○	○	○	○

- : With piping only on one side

- * The piping port of this product has been changed to a One-touch fitting. Other specifications, including the dimensions, are the same as those of the standard product.

For details, refer to the [Web Catalog](#).

Individual Parts Combinations

	Bar/IZTB		High voltage power supply module/IZTP			Controller/IZTC	
	40	42	40	41	42	40	41
IZT40	●		●			●	
IZT41	●			●			●
IZT42		●			●		●

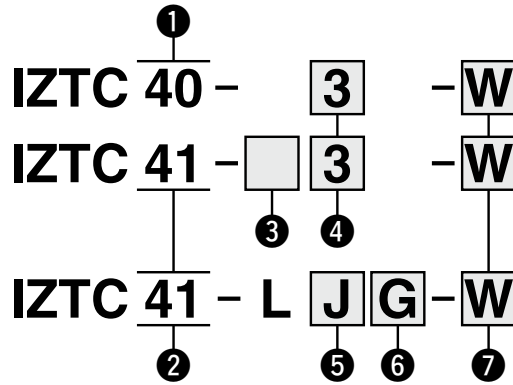
⚠ Caution

The transistor input/output specification and the IO-Link specification cannot be installed in combination.

Controller

Transistor input/output

IO-Link



Transistor input/output



Standard type

IO-Link



AC, Dual AC type

1 Model

Symbol	Model
40	Standard type

2 Model

Symbol	Model
41	AC type, Dual AC type

3 Input/Output

Symbol	Input/Output
Nil	NPN
P	PNP

4 Power supply cable length

Symbol	Length [m]
3	3
5	5
10	10
15	15
N	None

5 Power supply cable entry direction/length

Symbol	Entry direction	Length [m]
N	None	
J	Straight	3
K		5
M		10
S		3
T	Angled	5
Z		10

6 Communication cable entry direction/length

Symbol	Entry direction	Length [m]
N	None	
E	Straight	0.5
G		1
H		2
J		3
K		5
M		10
P		Angled
Q	1	
R	2	
S	3	
T	5	
Z	10	

7 DIN rail mounting bracket

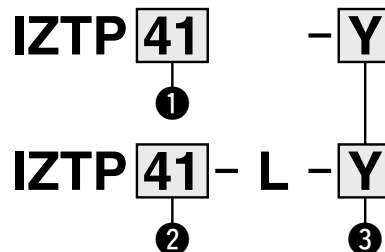
⇨ Refer to page 285-8.

Symbol	Type
Nil	None
W	Included

High voltage power supply module

Transistor input/output

IO-Link



Standard, AC type



Dual AC type

1 Model

Symbol	Model
40	Standard type (For Bar)
41	AC type (For Bar)
42	Dual AC type (For Bar)
43	AC type (For Nozzle)

2 Model

Symbol	Model
41	AC type (For Bar)
42	Dual AC type (For Bar)
43	AC type (For Nozzle)

3 DIN rail mounting bracket

⇨ Refer to page 285-8.

Symbol	Type
Nil	None
Y	Included

IZT40/4□(-L)-X516

Accessories (for Individual Parts)

Emitter cartridge (IZT40, 41(-L), 42(-L)-X516)

IZT40 - N **D**

High speed static neutralization



Energy saving static neutralization



• Emitter cartridge type/Emitter material

Symbol	Type	Material
D	High speed static	Tungsten
E	neutralization cartridge	Silicon
L	Energy saving static	Tungsten
M	neutralization cartridge	Silicon

Cartridge color	Emitter material
White	Tungsten
Gray	Silicon

IZS40 - N **V**

Energy saving high-efficiency



• Emitter cartridge type/Emitter material

Symbol	Type	Material
V	Energy saving	Tungsten
S	high-efficiency cartridge	Silicon

Cartridge color	Emitter material
White	Tungsten
Gray	Silicon

Bar bracket (IZT40, 41(-L), 42(-L)-X516)

IZT40 - B **E1**

• Bar bracket

Symbol	Type
E1	End bracket 1
E2	End bracket 2
M1	Intermediate bracket 1
M2	Intermediate bracket 2

* Refer to the table below for selecting a bracket.

Bracket combinations

	Intermediate bracket 1	Intermediate bracket 2
End bracket 1	○ (Adjustment angle ±90°)	×
End bracket 2	×	○ (Adjustment angle ±15°)

○: Available ×: Not available

* The number of intermediate brackets required, as listed below, depends on the bar length. 2 end brackets are always required regardless of the bar length.

Number of brackets

Bar length	End bracket	Intermediate bracket
160 to 760	2	None
820 to 1600		1
1660 to 2380		2
2440 to 2500		3

IZT40-BE1
End bracket 1



IZT40-BM1
Intermediate bracket 1

IZT40-BM2
Intermediate bracket 2

IZT40-BE2
End bracket 2



Power supply cable (IZT40, 41, 42-X516)

IZT40 - CP **3**

Cable specifications

⇒ Refer to the Web Catalog.



• Power supply cable length

Symbol	Length [m]
3	3
5	5
10	10
15	15

IO-Link power supply cable (IZT41-L, 42-L-X516)

IZT41 - CP **J**



• Power supply cable entry direction/length

Symbol	Entry direction	Length [m]
J	Straight	3
K		5
M		10
S	Angled	3
T		5
Z		10

IO-Link communication cable (IZT41-L, 42-L-X516)

IZT41 - CE **G**



• Communication cable entry direction/length

Symbol	Entry direction	Length [m]
E	Straight	0.5
G		1
H		2
J		3
K		5
M		10
P	Angled	0.5
Q		1
R		2
S		3
T		5
Z		10

DIN rail mounting bracket for controller and high voltage power supply module

IZT40 - B **1**

• DIN rail mounting bracket

Symbol	Type
1	For Controller
2	For High voltage power supply module
3	For High voltage power supply module for IZT42

For Controller

For High voltage power supply module

For IZT42



IZT40-B1



IZT40-B2



IZT40-B3

High voltage cable holder

IZT40 - E **1**

• High voltage cable holder

Symbol	Type
1	Straight
2	Elbow

Straight



IZT40-E1

Elbow



IZT40-E2

Accessories Sold Separately

Drop prevention cover (IZT40, 41(-L), 42(-L)-X516)

IZS40 - E 2

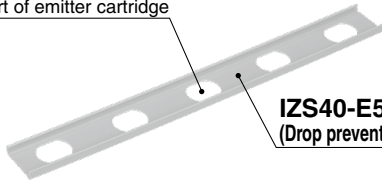
• Number of fixed emitter cartridges

Symbol	Type
2	2 pcs.
3	3 pcs.
4	4 pcs.
5	5 pcs.

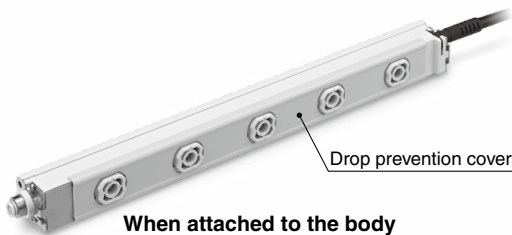
Standard bar length

Bar length symbol	Number of required drop prevention covers			
	IZS40-E2	IZS40-E3	IZS40-E4	IZS40-E5
16	1	—	—	—
22	—	1	—	—
34	—	—	—	1
40	—	2	—	—
46	—	1	1	—
58	—	—	1	1
64	—	—	—	2
82	—	1	—	2
112	—	1	—	3
130	—	2	—	3
160	—	2	—	4
190	—	2	—	5
232	—	1	—	7
250	—	2	—	7

Mounted part of emitter cartridge



IZS40-E5
(Drop prevention cover for 5 pcs.)



AC adapter (IZT40, 41, 42-X516)

IZT40 - CG 1

• AC cord selection

Symbol	Type
1	With AC cord
2	Without AC cord

* An AC cord is only for use in Japan. (Rated voltage 125 V, Plug JIS C 8303, Inlet IEC 60320-C6) The external input/output function cannot be used when an AC adapter is being used.
* Cannot be used for the IO-Link specification



AC adapter

Separate cable (IZT40, 41, 42-X516)

IZT40 - CF 1

• Cable length

Symbol	Length [m]
1	1
2	2
3	3



Cleaning kit (IZT40, 41, 42-X516)

IZS30 - M2



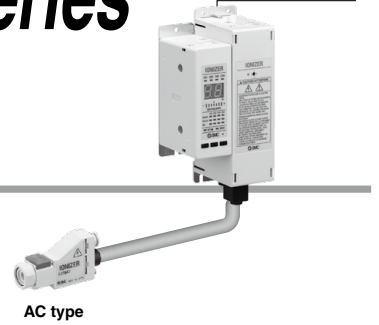
Replacement felt pad: IZS30-A0201
Replacement rubber grindstone: IZS30-A0202

Separate Controller

Nozzle Type Ionizer

IZT43(-L)-X516 Series

High voltage power supply module



How to Order

Nozzle + **High voltage power supply module** + **Controller**

Transistor input/output

IZT 43 - **D** **1** 6H **3** - **F** **U** - X516

IO-Link

IZT 43 - **D** **1** 6H **L** - **T** **R** **F** **U** - X516

• Series compatible with secondary batteries

1 Model

Symbol	Model
43	AC type

2 Emitter cartridge type

Symbol	Type
D	High speed static neutralization cartridge
L	Energy saving static neutralization cartridge

3 High voltage cable length

Symbol	Length [m]
1	1
2	2
3	3

* The number of included high voltage cable holders differs depending on the high voltage cable length. (Refer to the table below.)

Number of included high voltage cable holders

Symbol	Straight	Elbow
1	1	1
2	2	1
3	3	1

4 One-touch fitting

Symbol	Metric size
6H	ø6 Straight

5 Input/Output

Symbol	Input/Output
Nil	NPN
P	PNP

6 Power supply cable length

Symbol	Length [m]
3	3
5	5
10	10
15	15
N	None

* To use an AC adapter, specify "N", and select the AC adapter sold separately.

7 Power supply cable entry direction/length

Symbol	Entry direction	Length [m]
N	None	
J	Straight	3
K		5
M		10
S		3
T	Angled	5
Z		10

8 Communication cable entry direction/length

Symbol	Entry direction	Length [m]
N	None	
E	Straight	0.5
G		1
H		2
J		3
K		5
M		10
P		0.5
Q		1
R		2
S		3
T	5	
Z	Angled	10

9 Nozzle bracket

Symbol	Type
Nil	Without bracket
B	L-bracket
F	Angle adjustment bracket

10 DIN rail mounting bracket for controller and high voltage power supply module

Symbol	For Controller	For High voltage power supply module
Nil	None	None
U	Included	Included
W	Included	None
Y	None	Included

* The piping port of this product has been changed to a One-touch fitting. Other specifications, including the dimensions, are the same as those of the standard product.

For details, refer to the [Web Catalog](#).

For Individual Parts

How to Order



AC type

Combinations

	Nozzle/IZTN	High voltage power supply module/IZTP	Controller/IZTC
IZT43	43	43	41

Nozzle

IZTN 43 - D 1 6H - F

① ② ③ ④ ⑤

① Model

Symbol	Model
43	AC type

② Emitter cartridge type

Symbol	Type
D	High speed static neutralization cartridge
L	Energy saving static neutralization cartridge

* The piping port of this product has been changed to a One-touch fitting. Other specifications, including the dimensions, are the same as those of the standard product.

For details, refer to the [Web Catalog](#).

③ High voltage cable length

Symbol	High voltage cable length [m]
1	1
2	2
3	3

* The number of included high voltage cable holders differs depending on the high voltage cable length. (Refer to the table below.)

Number of included high voltage cable holders

Symbol	IZT43	
	Straight	Elbow
1	1	1
2	2	1
3	3	1

⚠ Caution

The transistor input/output specification and the IO-Link specification cannot be installed in combination.

④ One-touch fitting

Symbol	Metric size
6H	ø6 Straight

⑤ Nozzle bracket

Symbol	Type
Nil	Without bracket
B	L-bracket
F	Angle adjustment bracket

Controller

Transistor input/output

IZTC 41 - [] 3 - W

② ③

IO-Link

IZTC 41 - L J G - W

① ④ ⑤ ⑥

① Model

Symbol	Model
41	AC type, Dual AC type

④ Power supply cable entry direction/length

Symbol	Entry direction	Length [m]
N	None	
J	Straight	3
K		5
M		10
S	Angled	3
T		5
Z		10

② Input/Output

Symbol	Input/Output
Nil	NPN
P	PNP

⑤ Communication cable entry direction/length

Symbol	Entry direction	Length [m]
N	None	
E	Straight	0.5
G		1
H		2
J		3
K		5
M		10
P	Angled	0.5
Q		1
R		2
S		3
T		5
Z		10

Transistor input/output



IO-Link



AC, Dual AC type

③ Power supply cable length

Symbol	Length [m]
3	3
5	5
10	10
15	15
N	None

⑥ DIN rail mounting bracket

Symbol	Type
Nil	None
W	Included

High voltage power supply module

Transistor input/output

IZTP 43 - Y

①

IO-Link

IZTP 43 - L - Y

① ②

① Model

Symbol	Model
43	AC type (For Nozzle)

② DIN rail mounting bracket

Symbol	Type
Nil	None
Y	Included



AC type

IZT43(-L)-X516 Series

Accessories (for Individual Parts)

Emitter cartridge (For IZT43(-L))

IZT43 - N **D**

• Emitter cartridge type/
Emitter material

Symbol	Type	Material
D	High speed static neutralization cartridge	Tungsten
L	Energy saving static neutralization cartridge	Tungsten



Tungsten
(Color: White)

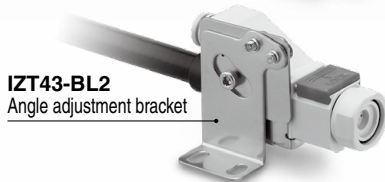
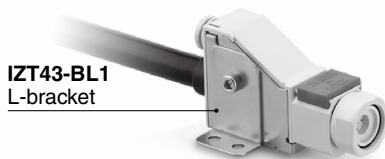
Cartridge color	Emitter material
White	Tungsten

Nozzle bracket (For IZT43(-L))

IZT43 - B **L1**

• Nozzle bracket

Symbol	Type
L1	L-bracket
L2	Angle adjustment bracket



Power supply cable (IZT43)

IZT40 - CP **3**

Cable specifications
⇒ Refer to page 108.



• Power supply cable length

Symbol	Length [m]
3	3
5	5
10	10
15	15

IO-Link power supply cable (IZT43-L)

IZT41 - CP **J**



• Power supply cable entry direction/length

Symbol	Entry direction	Length [m]
J	Straight	3
K		5
M		10
S	Angled	3
T		5
Z		10

IO-Link communication cable (IZT43-L)

IZT41 - CE **G**



• Communication cable entry direction/length

Symbol	Entry direction	Length [m]
E	Straight	0.5
G		1
H		2
J		3
K		5
M	10	
P	Angled	0.5
Q		1
R		2
S		3
T		5
Z		10

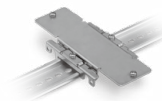
DIN rail mounting bracket for controller and high voltage power supply module

IZT40 - B **1**

• DIN rail mounting bracket

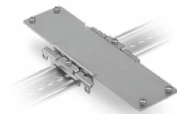
Symbol	Type
1	For Controller
2	For High voltage power supply module

For Controller



IZT40-B1

For High voltage power supply module



IZT40-B2

High voltage cable holder

IZT40 - E **1**

• High voltage cable holder

Symbol	Type
1	Straight
2	Elbow

Straight



IZT40-E1

Elbow



IZT40-E2

Accessories Sold Separately

High voltage cable assembly (For IZT43(-L))

IZT43 - A002 - 1

• High voltage cable length

Symbol	Length [m]
1	1
2	2
3	3



AC adapter (IZT43)

IZT40 - CG 1

• AC adapter

Symbol	Type
1	With AC cord
2	Without AC cord

- * An AC cord is only for use in Japan. (Rated voltage 125 V, Plug JIS C 8303, Inlet IEC 60320-C6) The external input/output function cannot be used when an AC adapter is being used.
- * Cannot be used for the IO-Link specification



AC adapter

Separate cable (IZT43)

IZT40 - CF 1

• Cable length

Symbol	Length [m]
1	1
2	2
3	3



Cleaning kit (For IZT43)

IZT43 - M2



Replacement felt pad: IZT43-A003

Replacement rubber grindstone: IZT43-A004

Nozzle Type Ionizer

IZN10E-X516 Series

How to Order

IZN10E - 01 P 06 Z - B1 - X516

High frequency AC nozzle model

Nozzle type


Symbol	Type
01	Energy saving nozzle
02	High flow rate nozzle
11	Female threads for piping*1

*1 Refer to the cautions listed below when using the female threads for piping.

Input/Output specifications

Symbol	Type
Nil	NPN input/output
P	PNP input/output

One-touch fitting

Symbol	Type
06	ø6: Metric size 

* The One-touch fitting cannot be changed after the delivery of the product.

Bracket

Symbol	Type	Part no.
Nil	Without bracket	—
B1	L-bracket	IZN10-B1
B2	Pivoting bracket	IZN10-B2
B3	DIN rail mounting bracket	IZN10-B3

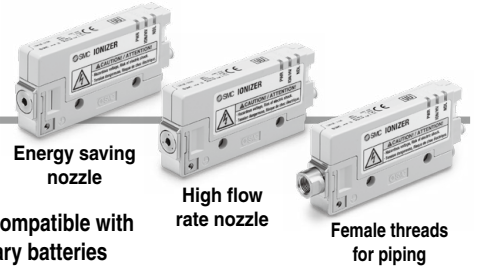
* Refer to page 130. Brackets are the same as those for the previous model (IZN10). Mounting is interchangeable.

Power supply cable

Symbol	Type	Part no.
Nil	With power supply cable (3 m)	IZN10E-CP
Z	With power supply cable (10 m)	IZN10E-CPZ
N	Without power supply cable	—

* Mounting is interchangeable with the previous model (IZN10).

* The piping port of this product has been changed to a One-touch fitting. Other specifications, including the dimensions, are the same as those of the standard product.



For details, refer to the [Web Catalog](#).

Accessories

Bracket

IZN10 - B1

Bracket

Symbol	Type
B1	L-bracket
B2	Pivoting bracket
B3	DIN rail mounting bracket

L-bracket

IZN10-B1



Fixed mounting



Pivot mounting

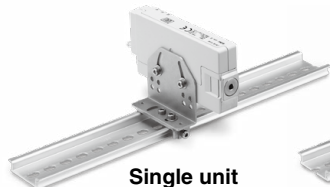
Pivoting bracket

IZN10-B2



DIN rail mounting bracket

IZN10-B3



Single unit



Manifold*1

*1 The L-bracket and the DIN rail mounting bracket can be used with the manifold.

Power supply cable

IZN10E - CP

Power supply cable

Symbol	Type
Nil	3 m
Z	10 m

Power supply cable: Made to order

IZN10E - CP 01 - X13

Power supply cable length

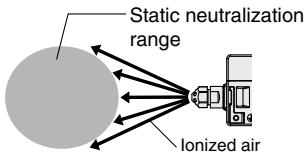
Symbol	Type
01	1 m
⋮	⋮
20	20 m

* Available in 1 m increments from 1 m to 20 m. Use standard power supply cables for 3 m and 10 m lengths.



Nozzle Variations

Circular diffusion nozzle

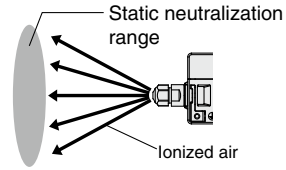


Part no.

IZN10-G-X198

Supply pressure specifications:
0.05 to 0.1 MPa

Flat diffusion nozzle



Part no.

IZN10-G-X199

Supply pressure specifications:
0.05 to 0.1 MPa

For the ionizer, please select the female threads for piping (Rc1/8).



IZN10E-11□□-X516

Fan Type Ionizer

IZF21/31-X516 Series



How to Order

IZF **21** - **□** - **□** **B** **□** **□** - **X516**

Model

Symbol	Max. air flow
21	1.8 m ³ /min
31	4.4 m ³ /min

Input/Output

Nil	NPN input/output
P	PNP input/output

Power supply cable, AC adapter

Nil	With power supply cable (3 m)
Z	With power supply cable (10 m)
Q	With AC adapter (With AC cord)
R	With AC adapter (Without AC cord)
N	None

Series compatible with secondary batteries

Air suction side filter

Nil	None
U	With filter*1

*1 Filter + Filter holder

Automatic cleaning unit, Louver

Nil	None
S	With automatic cleaning unit
W	With adjustable louver
Y	With automatic cleaning unit + adjustable louver

Bracket

B	With bracket
----------	--------------

* This product has a modified body mounting bolt. Therefore, the dimensions when mounting with a bracket will be different. Other specifications, including the dimensions, are the same as those of the standard product.

For details, refer to the [Web Catalog](#).

Accessories (for Individual Parts)

Emitter cartridge

IZF 21 - NT

• Model

21	For IZF21
31	For IZF31



Bracket

IZF 21 - B1 - X516

• Model

21	For IZF21
31	For IZF31

* 4 retaining bolts are included.



Power supply cable

IZS41 - CP

• Power supply cable

Nil	Power supply cable (3 m)
Z	Power supply cable (10 m)



IZS41 - CP 02 - X13

• Power supply cable length

01	Total length: 1 m
02	Total length: 2 m
...	...
19	Total length: 19 m
20	Total length: 20 m

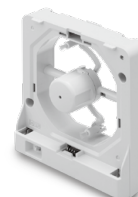
* Available in 1 m increments from 1 m to 20 m
Use standard power supply cables for 3 m and 10 m lengths.

Automatic cleaning unit

IZF 21 - HS

• Model

21	For IZF21
31	For IZF31

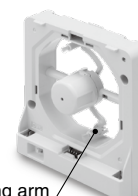


Cleaning arm (for the automatic cleaning unit)

IZF 21 - M3

• Model

21	For IZF21
31	For IZF31



Cleaning arm

* Removable

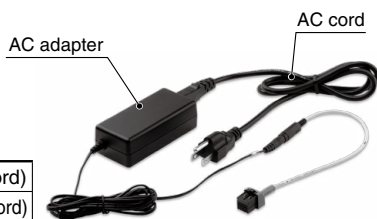
AC adapter

IZF21 - C G1

• AC adapter

G1	AC adapter (With AC cord)
G2	AC adapter (Without AC cord)

* When "G1" is selected, an AC cord with a rated voltage of 125 V is included.
If using an input voltage exceeding 125 VAC, select "G2" (Without AC cord) and prepare a suitable AC cord separately.
The external input/output function of the ionizer cannot be used when an AC adapter is being used.



Air suction side filter

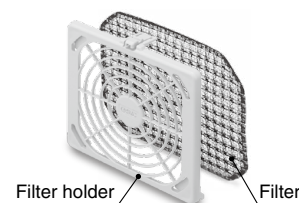
IZF 21 - F L

• Model

21	For IZF21
31	For IZF31

• Air suction side filter

L	Filter
U	Filter + Filter holder



Adjustable louver

IZF 21 - HW

• Model

21	For IZF21
31	For IZF31

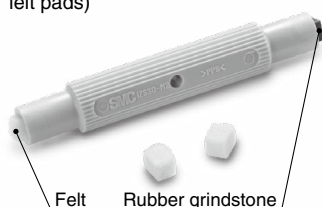


Accessories Sold Separately

Cleaning kit

IZS30 - M2

(With 1 felt pad, 1 rubber grindstone, and 2 replacement felt pads)



IZS30 - A0201

(10 replacement felt pads)



IZS30 - A0202

(1 replacement rubber grindstone)



Adjustment screwdriver

IZS30 - M1

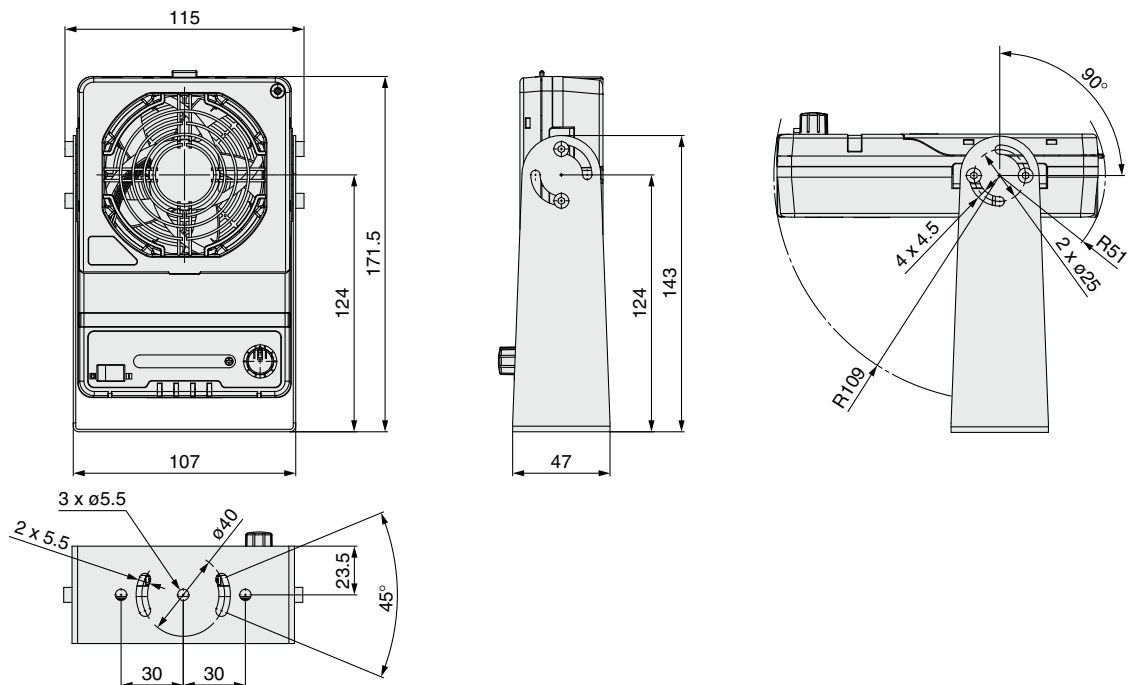


IZF21/31-X516 Series

Dimensions

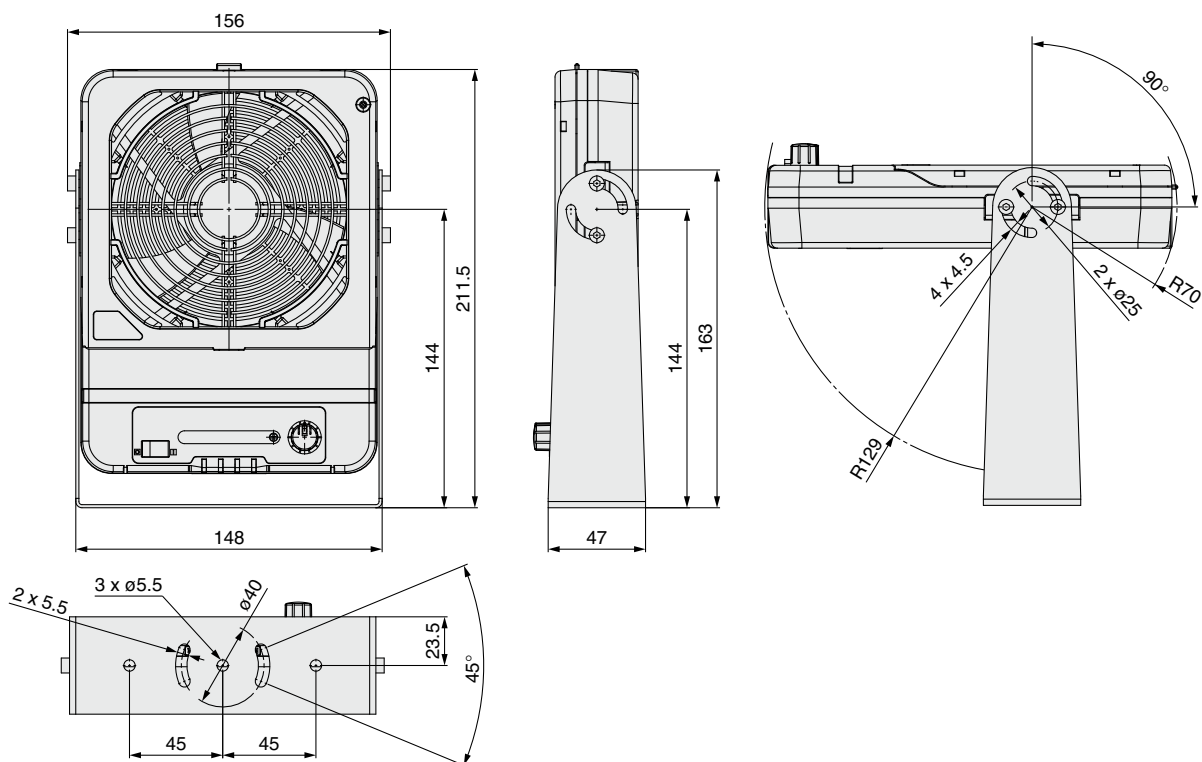
Bracket

IZF21-□-□B□□-X516



Bracket

IZF31-□-□B□□-X516



IZF
10

IZF
10R

Fan Type Ionizer

IZF10/IZF10R-X516 Series

How to Order



Without Flow Rate Adjustment Function

IZF10 - [] - [] - [] B - X516

Compact fan type

Air flow

Nil	0.66 m ³ /min
L	0.46 m ³ /min

Series compatible with secondary batteries

With flow rate adjustment function

With Flow Rate Adjustment Function

IZF10R - [] - [] B - X516

Compact fan type

With flow rate adjustment function
(0.19 to 0.80 m³/min)

Series compatible with secondary batteries

Bracket

B	With bracket
---	--------------

Power supply cable, AC adapter

Nil	With power supply cable (3 m)
Z	With power supply cable (10 m)
H ^{*1}	e-con connector
Q	With AC adapter (With AC cord)
R	With AC adapter (Without AC cord)
N	None

Output

Nil	NPN output
P	PNP output

*1 A power supply connector for customers supplying their own cable
Can only be used if the IZF10 is selected

* This product has a modified body mounting bolt. Therefore, the dimensions when mounting with a bracket will be different. Other specifications, including the dimensions, are the same as those of the standard product.

For details, refer to the [Web Catalog](#).

Accessories (for Individual Parts)

Power supply cable

IZF10 - C **P** IZF 10 IZF 10R

Power supply cable

P	Power supply cable (3 m)
PZ	Power supply cable (10 m)

Flow rate adjustment function

Nil	Without flow rate adjustment function (For the IZF10)
R	With flow rate adjustment function (For the IZF10R)



Without flow rate adjustment function
Power supply cable for the IZF10



With flow rate adjustment function
Power supply cable for the IZF10R

AC adapter

IZF10 - C **G1** IZF 10 IZF 10R

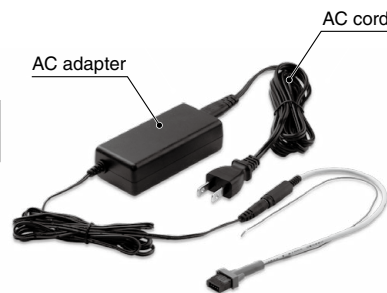
AC adapter

G1	AC adapter (With AC cord)
G2	AC adapter (Without AC cord)

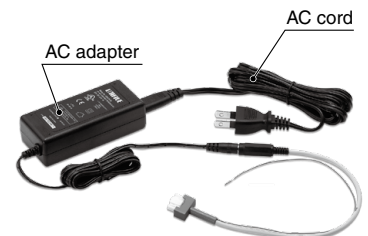
* The AC cord has a rated voltage of 125 V. If using an input voltage exceeding 125 VAC, select "G2" (Without AC cord) and prepare a suitable AC cord separately.

Flow rate adjustment function

Nil	Without flow rate adjustment function
R	With flow rate adjustment function



Without flow rate adjustment function



With flow rate adjustment function

e-con connector

ZS-28-C IZF 10



* Applicable wire size: AWG26 to 24, Conductor cross sectional area: 0.14 to 0.2 mm², Finished outside diameter: ø0.8 to ø1.0 mm

Cartridge case

IZF 10 - A1 IZF 10 IZF 10R

Flow rate adjustment function

10	Without flow rate adjustment function
10R	With flow rate adjustment function

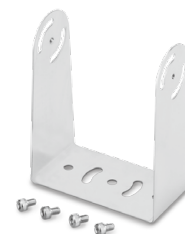


For with flow rate adjustment function

Bracket

IZF10-B1-X516 IZF 10 IZF 10R

* 4 retaining bolts are included.



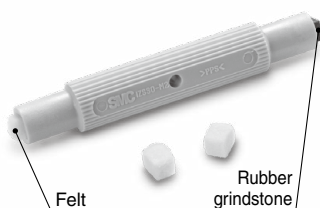
Accessories Sold Separately

IZF 10 IZF 10R

Cleaning kit

IZS30-M2

(With 1 felt pad, 1 rubber grindstone, and 2 replacement felt pads)



IZS30-A0201

(10 replacement felt pads)



IZS30-A0202

(1 replacement rubber grindstone)



Adjustment screwdriver

IZS30-M1

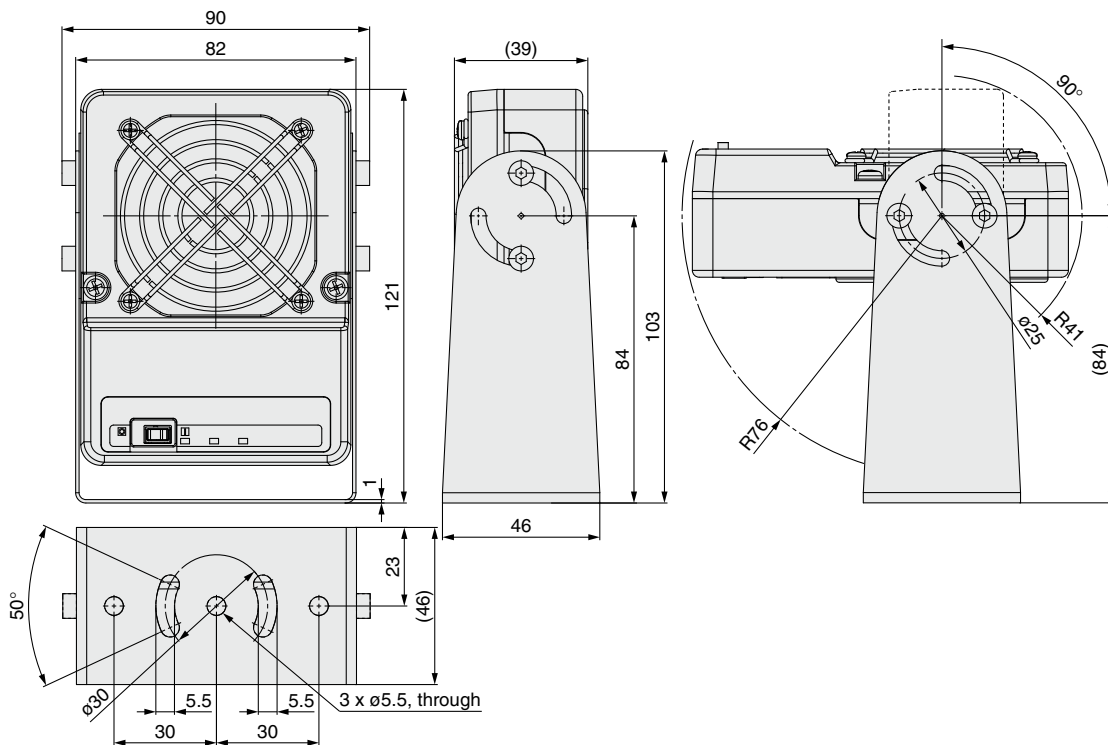


IZF10/IZF10R-X516 Series

Dimensions

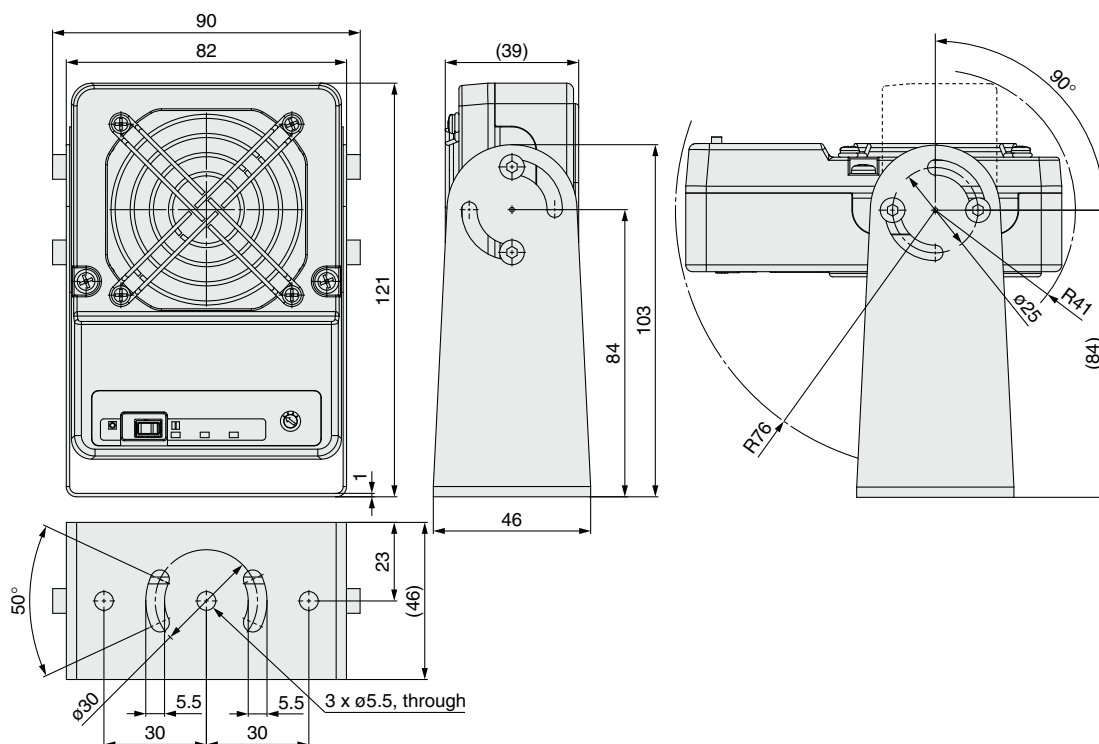
Bracket

IZF10-□□-□B-X516



Bracket

IZF10R-□□-□B-X516



Ionizer Gun

IZG10-X516 Series



* The piping port of this product has been changed to a One-touch fitting.
Other specifications, including the dimensions, are the same as those of the standard product.

For details, refer to the [Web Catalog](#).

How to Order



IZG10-08 01-01-X516

One-touch fitting

Symbol	Port size
08	ø8 (Metric)

AC adapter*1, Power supply cable

Symbol	Type
01	AC adapter (With AC cord*2)
02	AC adapter (Without AC cord)
03	Power supply cable (For 24 VDC wiring)
N	None

Nozzle type

Symbol	Type
01	Standard nozzle
02	Bypass nozzle*3

Series compatible with secondary batteries

Caution

The nozzle is specific for this product. Do not use any other nozzle. Doing so will adversely affect static neutralization performance.

- *1 The AC adapter body and the power supply cable (For AC adapter) come as a set. Refer to the AC adapter image below under "Accessories."
- *2 The AC cord has a rated voltage of 125 V. If using an input voltage exceeding 125 VAC, select "02" (Without AC cord) and prepare a suitable AC cord separately.
- *3 This nozzle is compliant with the OSHA standard for hand and portable powered tools and equipment, general (1910.242b) requiring that "static pressure at the main orifice shall not exceed 30 psi (210 kPa). This requirement is necessary in order to prevent a back pressure buildup in case the nozzle is obstructed or dead ended." * Supply pressure: 0.5 MPa or less
OSHA: Occupational Safety and Health Administration

Accessories (for Individual Parts)

AC adapter

IZG10-CG 1

AC adapter*1

Symbol	Type
1	With AC cord*2
2	Without AC cord



Power supply cable (For 24 VDC wiring)

IZG10-CP



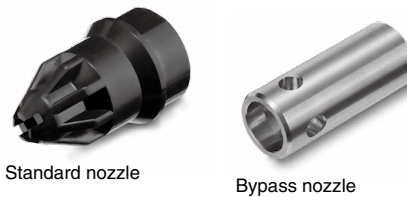
- *1 The AC adapter body and the power supply cable (For AC adapter) come as a set.
- *2 The AC cord has a rated voltage of 125 V. If using an input voltage exceeding 125 VAC, select "02" (Without AC cord) and prepare a suitable AC cord separately.
The input (AC) side and output (DC) side of the AC adapter are not isolated. If using the AC adapter as DC power supply for a different product, this may cause an electric shock or malfunction. Do not use the AC adapter for the DC power supply of a different product.

Nozzle assembly

IZG10-A001-01

Nozzle type

Symbol	Type
01	Standard nozzle
02	Bypass nozzle*1



- *1 This nozzle is compliant with the OSHA standard for hand and portable powered tools and equipment, general (1910.242b) requiring that "static pressure at the main orifice shall not exceed 30 psi (210 kPa). This requirement is necessary in order to prevent a back pressure buildup in case the nozzle is obstructed or dead ended." * Supply pressure: 0.5 MPa or less
OSHA: Occupational Safety and Health Administration

Emitter assembly

IZG10-NT

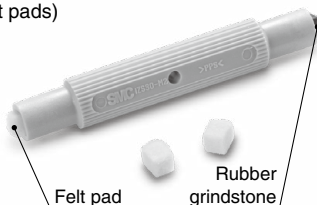


- * A protective cap is attached to the tip of the emitter when shipped. Please remove the cap before use.

Cleaning kit

IZS30-M2

(With 1 felt pad, 1 rubber grindstone, and 2 replacement felt pads)



IZS30-A0201

(10 replacement felt pads)



IZS30-A0202

(1 replacement rubber grindstone)



Removal tool

IZG10-M1

Use this tool to remove the emitter assembly. The removal tool is shipped together with the product. To order it separately, use the product number above. In addition, refer to the operation manual for replacement instructions.

