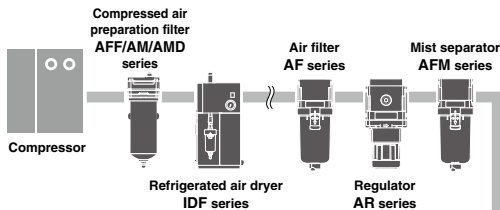


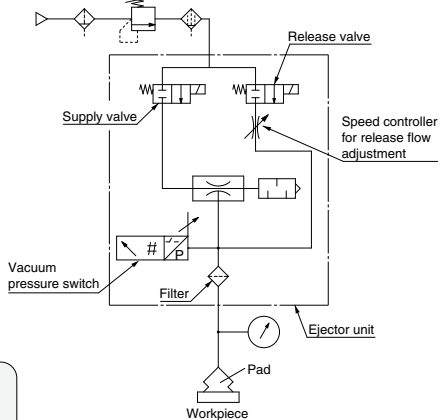
Adsorption Transfer System by Ejector

Ejector Module System

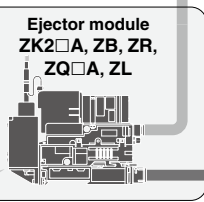
Equipment (ejector supply valve, release valve, throttle valve, vacuum pressure switch, and filter) that is needed for the ejector adsorption transfer system has been integrated to achieve efficient assembly work and a compact design.



Ejector module/Circuit



Ejector module ZK2□A, ZB, ZR, ZQ□A, ZL



For the ZK2□A, ZB, ZR, ZQ□A and ZL, the combination of single units at right can be integrated into a unit.

Flow switch PF2M series

Air suction filter ZF series AMJ series AFJ series

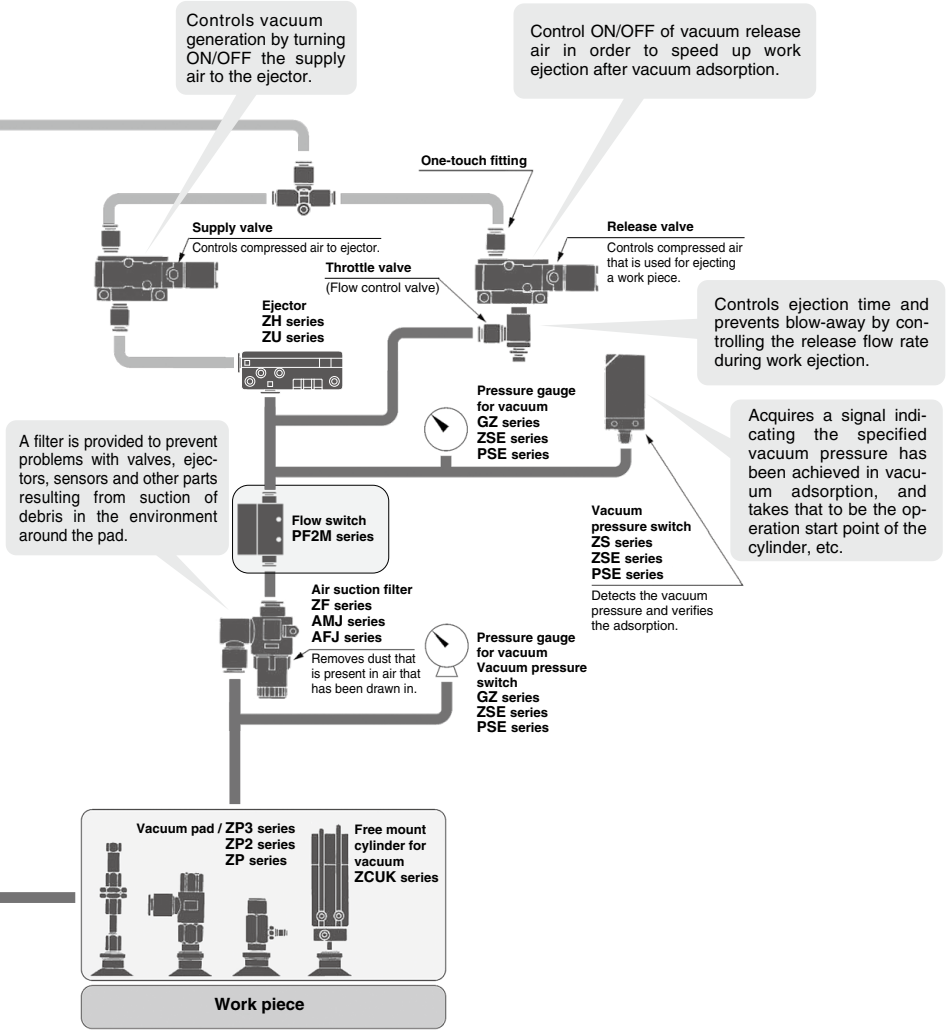
Removes dust that is present in air that has been drawn in.

Pressure gauge for vacuum GZ series ZSE series PSE series

Adsorption Transfer System by Ejector

Single Unit System

Equipment such as an ejector is configured as an individual unit. Thus, it is possible to create a flexible system configuration in which the circuit composition and the mounting locations can be selected as desired.



Adsorption Transfer System for Vacuum Pump

Equipment (vacuum switching valve, release valve, throttle valve, vacuum pressure switch, and filter) that is needed for controlling the vacuum pressure has been integrated to achieve efficient assembly work and a compact design.

