

Speed Controller: Standard Type In-line Push Locking Type

AS Series

RoHS

Lock speed setting, with the touch of a button

It can be locked only by pushing the handle after adjustment.

Convenient opening indication scale

The opening indication scale for the needle valve is provided on the handle to facilitate speed adjustments.

Easy speed control at low flow volume ranges

Possible to control the mass velocity

Constant handle constructed of metal to withstand heavy usage

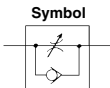
In addition to the standard handle made of resin, a heavy-duty metal handle is also available.

Retainer prevents an accidental loss of needle



Resin handle

Metal handle



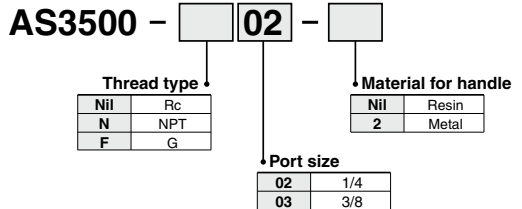
⚠ Caution

Be sure to read this before handling the products.
Refer to page 11 for safety instructions and pages 19 to 22 for flow control equipment precautions.

Model/Specifications

Specifications	Model	Resin handle	AS3500-02	AS3500-03
		Metal handle	AS3500-02-2	AS3500-03-2
Port size			1/4	3/8
Fluid	Air			
Proof pressure	1.5 MPa			
Max. operating pressure	1 MPa			
Min. operating pressure	0.05 MPa			
Ambient and fluid temperature	-5 to 60°C (No freezing)			
Weight	130 g (Metallic handle: 140 g)			
Free flow	Flow rate (L/min (ANR))	810		
	Sonic conductance dm ³ /(s·bar)	2.3		
	Critical pressure ratio	0.35		
Controlled flow	Flow rate (L/min (ANR))	810		
	Sonic conductance dm ³ /(s·bar)	2.3		
	Critical pressure ratio	0.2		

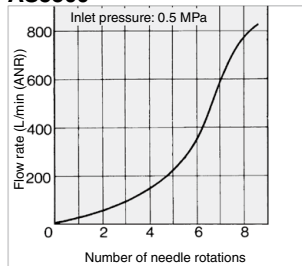
How to Order



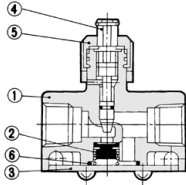
Needle Valve/ Flow Rate Characteristics

Note) The flow rate characteristics are representative values.

AS3500



Construction



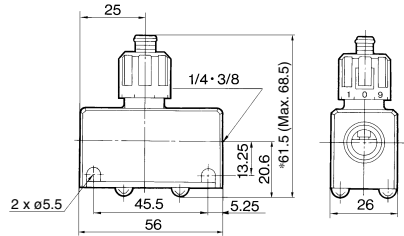
Component Parts

No.	Description	Material
1	Body	Aluminum alloy
2	Valve	NBR
3	Cap	Rolled steel
4	Needle	Brass
5	Handle	POM
		Zinc alloy

Replacement Parts

No.	Description	Material	Part no.
6	O-ring	NBR	14284

Dimensions



* Reference dimensions