

Made to Order Common Specifications: -XC30: Rod Side Trunnion



37 Rod Side Trunnion

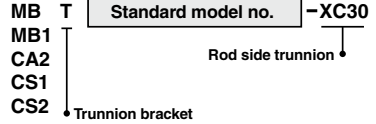
Symbol
-XC30

This cylinder shortens the distance between the fulcrum and the rod end by installing a trunnion bracket in front of the rod side cover.

Applicable Series

Series	Description	Model	Action	Vol. no. (for std model)
MB	Standard type	MB-Z ^{*1}	Double acting, Single rod	Web Catalog
		MBW-Z ^{*1}	Double acting, Double rod	
	Non-rotating rod type	MBK-Z	Double acting, Single rod	
	Cylinder with end lock	MBB	Double acting, Single rod	
	Smooth cylinder	MBY-Z	Double acting, Single rod	
MB1	Standard type	MB1-Z ^{*1}	Double acting, Single rod	
		MB1W-Z ^{*1}	Double acting, Double rod	
	Non-rotating rod type	MB1K-Z	Double acting, Single rod	
CA2	Air cylinder	CA2-Z	Double acting, Single rod	
	End lock cylinder	CBA2 ^{*2}	Double acting, Single rod	
	Smooth cylinder	CA2Y-Z	Double acting, Single rod	
CS1	Standard type	CS1	Double acting, Single rod	
		CS1W	Double acting, Double rod	
	Low friction	CS1Q	Double acting, Single rod	
CS2	Standard type	CS2	Double acting, Single rod	
		CS2W	Double acting, Double rod	
	Smooth cylinder	CS2Y	Double acting, Single rod	

How to Order



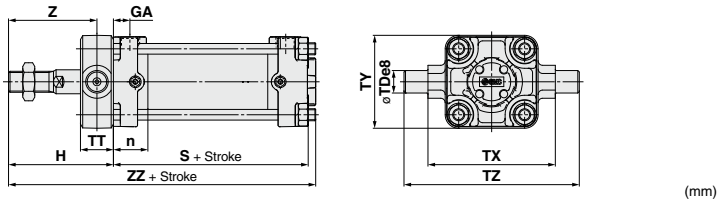
Specifications: Same as standard type

*1 Except $\phi 125$

*2 Only applicable to the type with a head side end lock

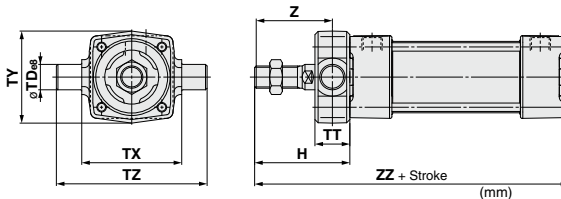
Dimensions (Dimensions other than below are the same as standard type.)

CA2 series



Symbol	n	GA	H	S	TDø8	TT	TX	TY	TZ	Z	ZZ
Bore size 40	23	11	66	80	15 ^{-0.032} _{-0.059}	22	85	62	117	55	151
50	26	13	71	86	15 ^{-0.032} _{-0.059}	22	95	74	127	60	163
63	27	13	79	94	18 ^{-0.032} _{-0.059}	28	110	90	148	65	179
80	32	16	94.5	111	25 ^{-0.040} _{-0.073}	34	140	110	192	77.5	212.5
100	35	16	100	121	25 ^{-0.040} _{-0.073}	40	162	130	214	80	229

MB series



Bore size	H	TDø8	TT	TX	TY	TZ	Z	ZZ
32	47	12 ^{-0.032} _{-0.059}	17	50	49	74	38.5	135
40	60	16 ^{-0.032} _{-0.059}	22	63	58	95	49	148
50	66	16 ^{-0.032} _{-0.059}	22	75	71	107	55	164
63	72	20 ^{-0.040} _{-0.073}	28	90	87	130	58	170
80	86	20 ^{-0.040} _{-0.073}	34	110	110	150	69	204
100	92	25 ^{-0.040} _{-0.073}	40	132	136	182	72	210

* Dimensions except mentioned above are the same as standard type.

Made to Order Common Specifications: -XC30: Rod Side Trunnion

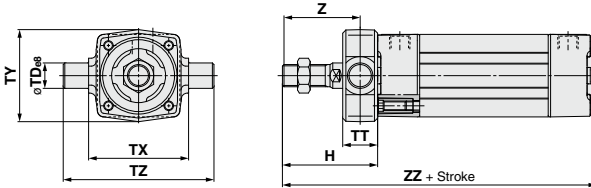


37 Rod Side Trunnion

Symbol
-XC30

Dimensions (Dimensions other than below are the same as standard type.)

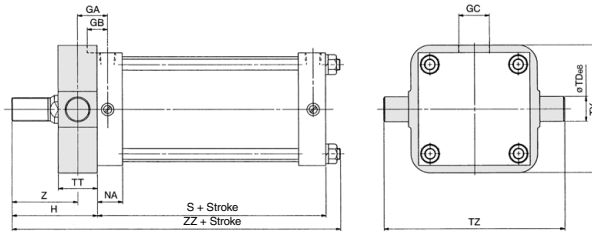
MB1 series



Bore size	H	øTDø8	TT	TX	TY	TZ	Z	ZZ
32	47	12 ^{+0.032} _{-0.059}	17	50	49	74	38.5	135
40	60	16 ^{+0.038} _{-0.059}	22	63	58	95	49	148
50	66	16 ^{+0.038} _{-0.059}	22	75	71	107	55	164
63	72	20 ^{+0.040} _{-0.073}	28	90	87	130	58	170
80	86	20 ^{+0.040} _{-0.073}	34	110	110	150	69	204
100	92	25 ^{+0.040} _{-0.073}	40	132	136	182	72	210

* Dimensions except mentioned above are the same as standard type.

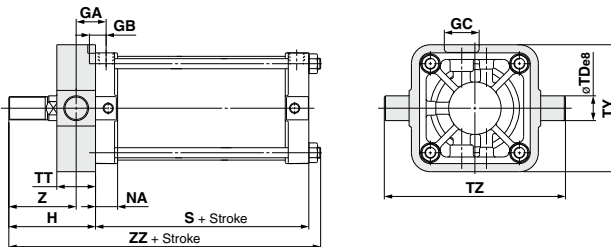
CS1 series



Bore size (mm)	Symbol	GA	GB	GC	NA	S	øTDø8	TT	TY	TZ	H	Z	ZZ
125		38	23	45	32	95	32 ^{-0.050} _{-0.089}	50	164	234	113	88.0	227
140		40.5	23	45	32	95	36 ^{-0.050} _{-0.089}	55	184	262	113	85.5	227
160		45.5	25.5	50	36	103	40 ^{-0.050} _{-0.089}	60	204	292	123	93.0	248
180		45	25.5	50	36	108	45 ^{-0.050} _{-0.089}	59	228	326	138	108.5	272
200		45	25.5	50	36	108	45 ^{-0.050} _{-0.089}	59	257	355	138	108.5	272
250		54.5	30	60	46	138	56 ^{-0.060} _{-0.106}	69	325	447	163	128.5	331
300		59.5	30	70	46	143	67 ^{-0.060} _{-0.106}	79	390	534	178	138.5	357

* Dimensions except mentioned above are the same as standard type.

CS2 series



Bore size (mm)	GA	GB	GC	NA	S	TDø8	TT	TY	TZ	H	Z	ZZ
125	38	23	45	28.5	96	32 ^{-0.050} _{-0.089}	50	164	234	112	87	221
140	40.5	23	45	28.5	96	36 ^{-0.050} _{-0.089}	55	184	262	112	84.5	221
160	46	26	50	32.5	104	40 ^{-0.050} _{-0.089}	60	204	292	122	92	241