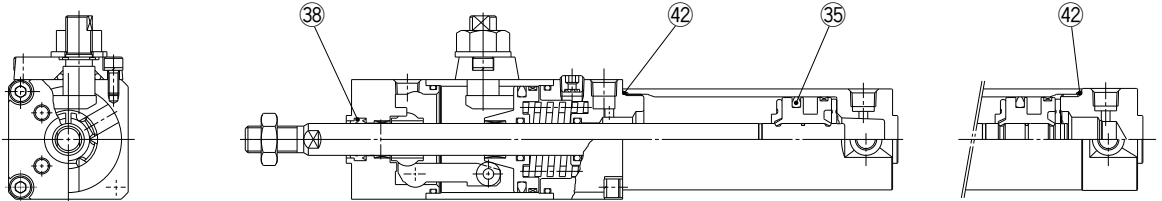


# CLG1 Series ø20, ø25, ø32, ø40



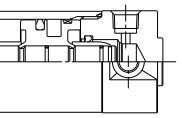
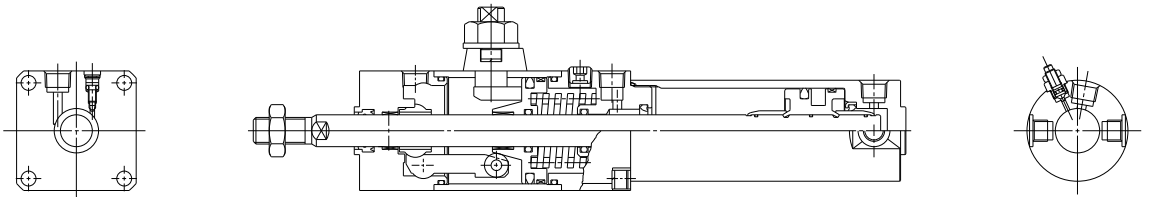
## Construction

### With rubber bumper: CLG1BN



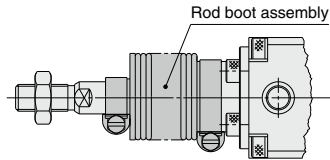
Long stroke

### With air cushion: CLG1BA



Long stroke

### With rod boot



\* The numbers correspond with those in the "Construction" of the CLG1 series in the **Web Catalog**.

\* Replaceable with the rod boot assembly  
For details on replacement part numbers, refer to page 253.

## Seal Kit List

No.	Description	Material	Note
35	Piston seal	NBR	
38	Rod seal B		
42	Cylinder tube gasket		

## Replacement Parts: Seal Kit

Bore size (mm)	Part no.	Contents
20	CG1N20-PS	Set of nos. 35, 38, 42
25	CG1N25-PS	
32	CG1N32-PS	
40	CG1N40-PS	

\* The since the lock section for the CLG1 series is normally replaced as a unit, kits are for the cylinder section only. These can be ordered using the order number for each bore size.

\* The seal kit includes a grease pack (10 g).

Order with the following part number when only the grease pack is required.

**Grease pack part no.: GR-S-010 (10 g)**

## Replacement Parts: Lock Unit

**CLG1B N 40 TN - E**

Cushion type

N	Rubber bumper
A	Air cushion

Bore size (mm)

Lock operation

E	Spring locking (Exhaust locking)
P	Pneumatic locking (Pressure locking)
D	Spring and pneumatic locking

Port thread type

Nil	Rc
TN	NPT